

# Pro-Tech

Construction Ltd.

576-0727

*Eileen C. Skinner*

*John Williams*

Owners

*Building New Homes*

*Since 1986*

**Proud Members of :**



*“Wouldn't you like  
to live on  
Castle Bridge Drive  
in beautiful  
Brookfield Plains?”*

*Greg Power*

726-8880

*Amanda Ryan*

745-8880

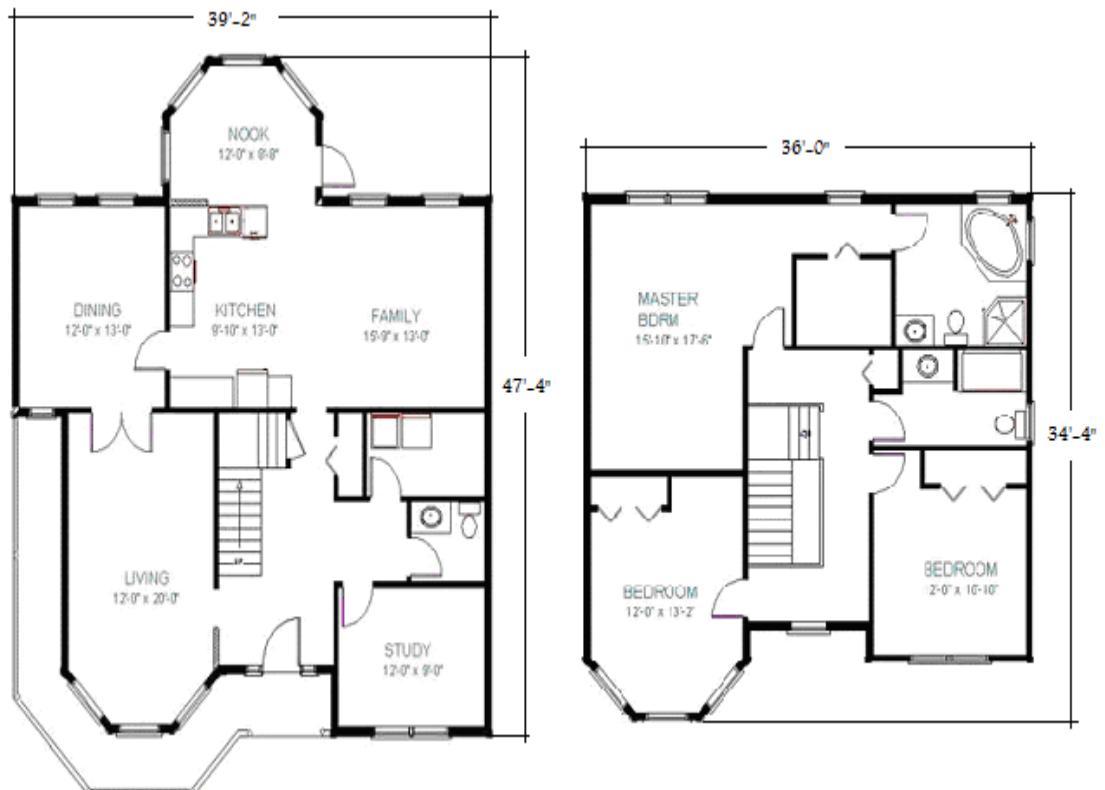
# PP Brookfield Plains



[www.carterhomedesigns.com](http://www.carterhomedesigns.com)

## The Hogan 2247sqft

All Measurements are Approximate



[www.town-country.ca](http://www.town-country.ca)